

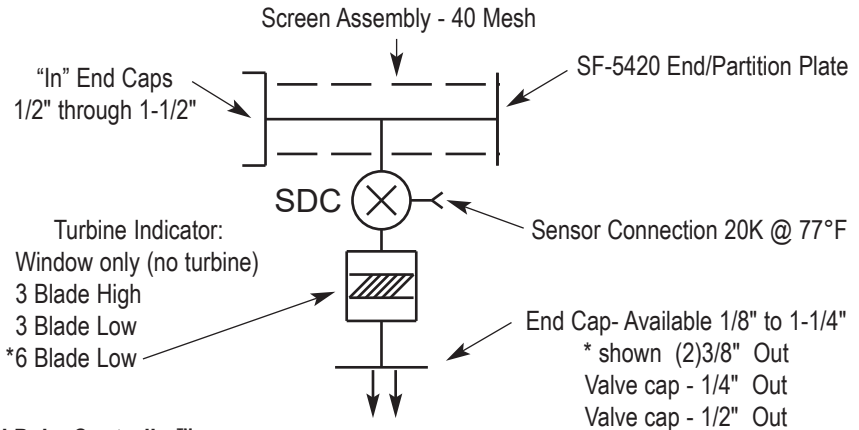
# StackPulseController™ Modular Digital Temperature Controller

## StackPulseController™ MODULE - SPC



Rotary Flow Turbine  
for Indication  
OR  
Clip-on Digital  
Flow Meter

Provides a NORMALLY CLOSED Pressure Differential Valve that is Electrically operated. The Diaphragm is closed via a self cleaning Orifice.  
L E D Indicator lights will provide the Valve status  
Each Module has a Visual Flow Turbine that may be used with a Digital Flow Read out  
A Key Board is used to set the Digital Set Point / Temperature Display.  
Valve Status Indicator will provide continuous read out of Control Functions.  
Power Connection.:4 Pin Connexall - 4 Pin DIN - 4 Pin Micro and 4 Pin Mini Water Proof Connector  
Supply Volt - 24 V ACDC - 120 V AC - 240 V AC @ < 10 Watt

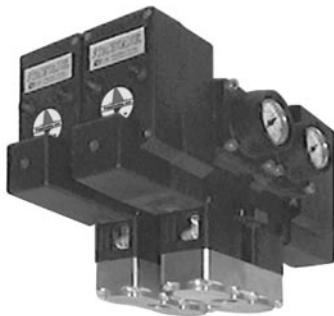


**StackPulseController™**  
In - 1-1/4"  
Out - (2) 3/8"  
Rotary Flow Turbine

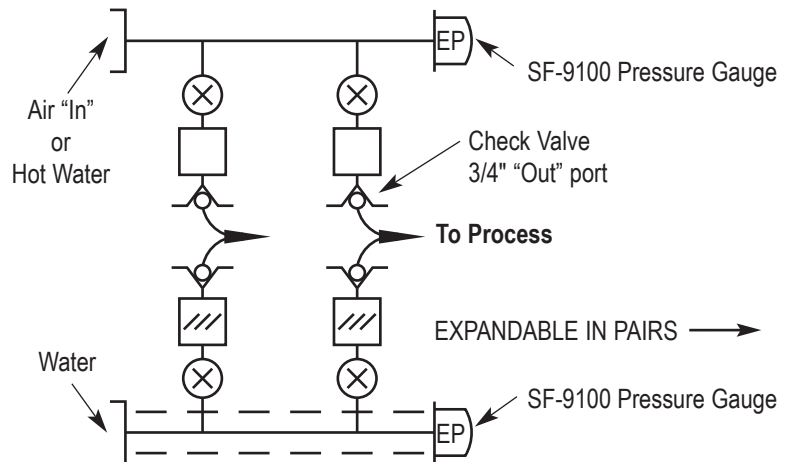
# SPC-1000 ..... \$ 620.00

## StackBack™ Valve

### StackBack™ - Electric valve



For rapid change of temperature



**StackBack™ Assembly** for detail - Consult Factory

# SBA-2000

PC-PRICE-24-1024

**For Custom Applications - Contact Factory**